



Telephone 02 67231309

Mobile 0484365515

E-mail gilgai-p.school@det.nsw.edu.au



TERM 4 WEEK 4 NEWSLETTER

PRINCIPAL'S MESSAGE

Welcome to Week 4. What a fabulous week we had last week, with the Halloween Disco, K/1 visiting 5/6 for Peer Support, the sun shone and we are all living. Sadly, within our community and through the media there is aggressive behaviour and violence. There have been some frightening stories lately on the effects of aggression on children. Aggressive behaviours can be; physical violence—such as biting, hitting, and kicking, verbal hostility; like shouting swearing, sending threatening messages through emails, phone calls, or social media, or making threats against someone's life. Research shows us that children with serious aggression problems are more likely than children without such problems to become teenagers who have problems with aggression, other mental health issues or substance use—and as adults they are more likely to engage in acts of violence. There are also strategies to assist with aggression, allowing someone to speak and listening to what they have to say often helps calm them down. In many cases, people simply need to vent their frustration. An important skill to have when dealing with people, particularly when they're behaving aggressively, is active listening. Please listen to your family and check in on them, you may be preventing aggressive or violent behaviour from starting. Always seek help if you are in an aggressive or violent situation. The police can also assist. Take care and try to listen a little more and see if your life is calmer.

Gina Baker

YEAR 6 TO 7 TRANSITION

The next date for high school transition is **Thursday 14th November**. This is a full day for students to go to their nominated high school for 2025. Students are to make their own way to and from their high school on this day.

THIS WEEK'S CANTEEN MENU

All usual items are available this week. Please bring in your lunch order before Friday. Fridays are always special with our canteen, our thanks once again goes to Molly and her team. We appreciate the work of our P and C members, more than words can say.

**Did you Hug
Your Child Today?**

IMPORTANT DATES

November 7th Sapphire Small Schools Gala Day
November 14th Teddy Bear's Picnic Pre-School -Yr 2
November 14th Year 6 to 7 Full Day Transition to their nominated high school for 2025
November 18th Lake Ainsworth Excursion
November 20th Kindy Transition Full Day
November 26th SRC Crazy Sock Day with Biscuit Decorating cost \$1
November 27th Responsible Pet Ownership Visit K-2
December 2 - 6 K-6 Swim School
December 11th Presentation Night 6:00pm
December 13th Year 6 Farewell
December 13th P & C Christmas Disco
December 18th Last day for students for 2024

YEAR 6 PARENTS AND CARERS

Please bring in a photo of your **year 6 child as a baby, in kindergarten and year 3**. These photos will be used in a slide show for our Year 6 Farewell Assembly.

KINDERGARTEN ORIENTATION DATE CHANGE

"Little Learners will be at Orientation sessions on Wednesday 6th November 9:30am—1:30pm and Wednesday November 20th 9:00—3:07. **Parents and carers are to drop their child at their K/1 classroom** on the full day of transition. Thank you.

CONTACT DETAILS

Please make sure you let the office know of **ANY CHANGES** to your phone number or address. In case of an emergency, your child needs us to have the correct and up to date contact details. Thank you for assisting us to stay connected.

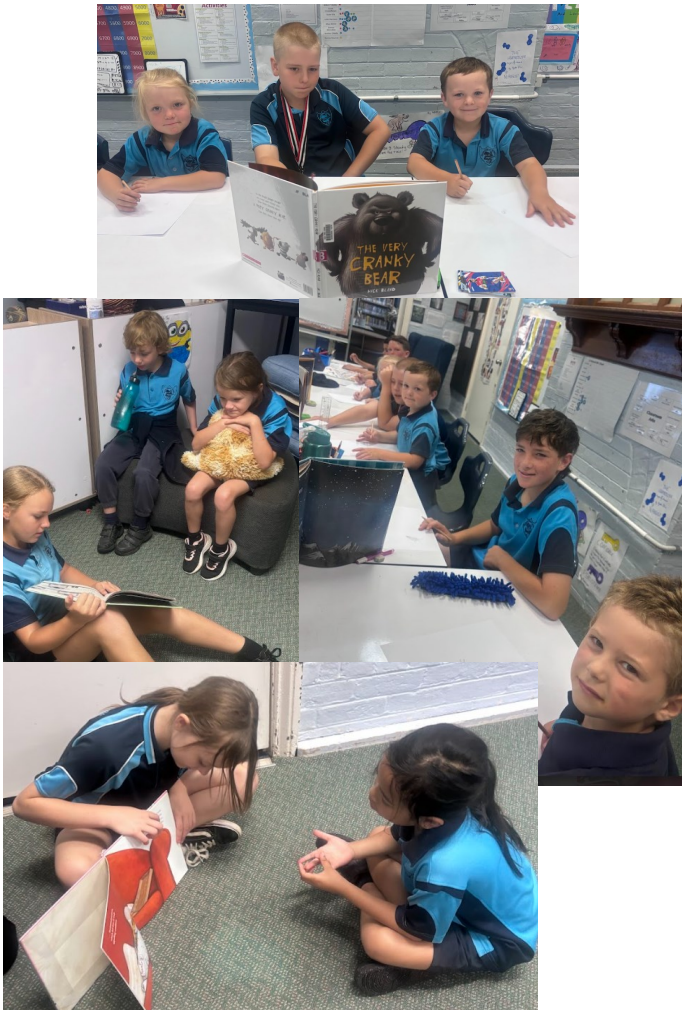
LAKE AINSWORTH EXCURSION

The excursion is very soon, Monday 18th to Friday 22nd November. Full payment should have been paid last week. Contact the office if you have any payment concerns and we can set up a payment plan if needed.

CONGRATULATIONS

Mrs Sharon Morton has a permanent teaching position beginning in 2025 and will be leaving Gilgai Public School at the end of the year. We wish her all the best. Mrs Madison Richards is returning to Gilgai Public School in 2025 and we are pleased to have her back from maternity leave.

5/6 AND K/1 WORKING TOGETHER IN PEER SUPPORT



**Everyone
deserves to
feel safe at
school**



Please treat our staff and students with kindness and respect



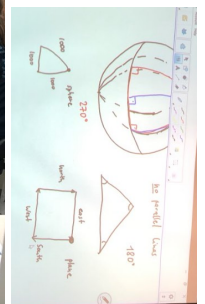
Aggressive behaviour will not be tolerated



Together, we can create a safe and harmonious environment for our students and staff



5/6, MRS AITKEN AND MRS BARNES AT 'FAR OUT SCIENCE' UNE ARMIDALE





School Community Charter

Collaborative. Respectful. Communication.

The following School Community Charter outlines the responsibilities of parents, carers, educators and school staff in NSW public schools to ensure our learning environments are collaborative, supportive and cohesive.

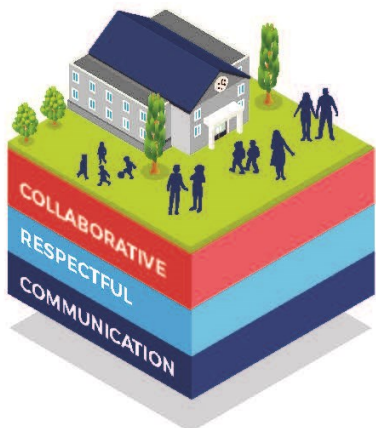
We treat each other with **respect**

What our schools provide

NSW public schools work to create positive environments for students, staff and the entire school community that support student learning. We strive to ensure that every student is known, valued and cared for.

The best education happens when parents and schools work together.

The School Community Charter aligns with the NSW Department of Education Strategic Plan 2018 – 2022.



Positive environments

It is important that our NSW public schools are positive environments and that parents and carers are kept informed of students' progress and school announcements.

Parents and carers can expect:

- To be welcomed into our schools to work in partnership to promote student learning.
- Communication from school staff will be timely, polite and informative.
- Professional relationships with school staff are based on transparency, honesty and mutual respect.
- To be treated fairly. Tolerance and understanding are promoted as we respect diversity.

We **prioritise** the wellbeing of all students and staff

Unsafe behaviour is not acceptable in our schools

We work **together** with the school

Ensuring respectful learning environments for all members of NSW Public Schools communities.



We create
collaborative
learning
environments

We
all play
our part

We work
in partnership
to promote
student
learning

Communicating with our schools

Our staff will find a time to talk to you when they can give you their full attention. Please remember that while our staff are in class or dealing with other matters, they may not be available to answer your questions immediately.

Our schools and communities will make sure that written communication is appropriate, fair and easy to read. We encourage you to use email and social media appropriately to connect with your school and stay up-to-date with up-coming events in the school community.

Our guide for parents, carers and students provides useful information about the complaints process:

education.nsw.gov.au/about-us/rights-and-accountability/complaints-compliments-and-suggestions/guide-for-parents-carers-and-students

Respectful communication is a right

In all workplaces people have the right to feel respected. Unacceptable and offensive behaviour has no place in our school communities.

To ensure the wellbeing of students, staff and the community in our schools, steps will be taken to address unacceptable behaviour. This may include restricting contact with the school community or, in more serious cases, referral to NSW Police.

Unacceptable behaviour may include but is not limited to:

- Aggressive or intimidating actions, such as violence, threatening gestures or physical proximity.
- Aggressive or intimidating language, including the use of obscenities, making sexist, racist or derogatory comments or using a rude tone.
- Treating members of the school community differently due to aspects such as their religion or disability.
- Inappropriate and time wasting communication.



Collaborative.
Respectful.
Communication.

School Community Charter

education.nsw.gov.au